



**India Meteorological Department  
(Ministry of Earth Sciences)**

**NATIONAL BULLETIN NO. 36 (LAND/02/2024)**

**TIME OF ISSUE: 1515 HOURS IST**

**DATED: 31.08.2024**

**FROM:INDIA METEOROLOGICAL DEPARTMENT**

**(FAX NO. 24643965/24699216/24623220)**

**TO: CONTROL ROOM, NDM, MINISTRY OF HOME AFFAIRS (FAX.NO. 23093750)  
CONTROL ROOM NDMA (FAX.NO. 26701729)  
CABINET SECRETARIAT (FAX.NO.23012284, 23018638)  
PS TO HON'BLE MINISTER FOR S & T AND EARTH SCIENCES (FAX NO.23316745)  
SECRETARY, MOES (FAX NO. 24629777)  
H.Q. (INTEGRATED DEFENCE STAFF AND CDS) (FAX NO. 23005137/23005147)  
DIRECTOR GENERAL, DOORDARSHAN (23385843)  
DIRECTOR GENERAL, AIR (23421105, 23421219)  
PIB MOES (FAX NO. 23389042)  
UNI (FAX NO. 23355841)  
D.G. NATIONAL DISASTER RESPONSE FORCE (NDRF) (FAX NO. 26105912, 2436 3260)  
DIRECTOR, PUNCTUALITY, INDIAN RAILWAYS (FAX NO. 23388503)  
CHIEF SECRETARY, ODISHA (FAX NO. 0674-2536660)  
CHIEF SECRETARY, WEST BENGAL (FAX NO. 033-22144328)  
CHIEF SECRETARY, ANDHRA PRADESH (FAX NO. 0863-2441029)  
CHIEF SECRETARY, TELANGANA (FAX NO. 040-23453700)  
CHIEF SECRETARY, MAHARASHTRA (FAX NO. 022- 22028594)  
CHIEF SECRETARY, GUJARAT (FAX NO. 079-23250305)  
CHIEF SECRETARY, DAMAN & DIU (FAX NO. 0260-2230775)  
CHIEF SECRETARY, DADRA & NAGAR HAVELI (FAX NO. 0260-2645466)  
CHIEF SECRETARY, GOA (FAX NO. 0832-2415201)**

**Sub: (a) Cyclonic Storm "ASNA" (pronounced as As-Na) over northeast and adjoining northwest Arabian Sea and (b) Depression over Westcentral & adjoining Northwest Bay of Bengal.**

**(a) Cyclonic Storm "ASNA" (pronounced as As-Na) over northeast & adjoining northwest Arabian Sea**

The **Cyclonic Storm "ASNA" (pronounced as As-Na)** over northeast & adjoining northwest Arabian Sea moved westwards with a speed of 15 kmph during past 6 hours and lay centered at 1130 hours IST of 31<sup>st</sup> August, 2024 over the same region near latitude 23.6°N and longitude 64.9°E, 410 km west of Naliya (Gujarat), 270 km west-southwest of Karachi (Pakistan), 230 km southeast of Pasni (Pakistan) and 670 km east of Muscat (Oman).

It is likely to continue to move nearly westwards over northeast & northwest Arabian Sea and maintain its intensity till morning of 1st September. Thereafter, it is likely to move west-southwestwards for subsequent 24 hours and weaken gradually into a depression over northwest Arabian Sea by morning of 2nd September 2024.

Forecast track and intensity are given in the following table:

<b>Date/Time(IST)</b>	<b>Position (Lat. °N/ long. °E)</b>	<b>Maximum sustained surface wind speed (Kmph)</b>	<b>Category of cyclonic disturbance</b>
31.08.24/1130	23.6/64.9	70-80 gusting to 90	Cyclonic Storm
31.08.24/1730	23.6/64.2	70-80 gusting to 90	Cyclonic Storm
31.08.24/2330	23.6/63.4	65-75 gusting to 85	Cyclonic Storm
01.09.24/0530	23.5/62.5	60-70 gusting to 80	Cyclonic Storm
01.09.24/1130	23.2/61.8	50-60 gusting to 70	Deep Depression
01.09.24/2330	22.6/61.1	40-50 gusting to 60	Depression

**Warnings:**

**(i) Wind warning:**

- Squally wind speed reaching 45-55 kmph gusting to 65 kmph is prevailing along & off Pakistan coasts on 31<sup>st</sup> August and 1<sup>st</sup> September.
- Squally wind speed reaching 40-50 kmph gusting to 60 over adjoining Saurashtra & Kachchh coasts on 31<sup>st</sup> August and 1<sup>st</sup> September.
- Gale wind speed reaching 70-80 kmph gusting to 90 kmph prevailing over northeast Arabian Sea, is likely to continue from morning to evening of 31<sup>st</sup> August and decrease gradually thereafter becoming squally wind speed reaching 40-50 kmph gusting to 60 kmph by morning of 1<sup>st</sup> September. It will further decrease thereafter.
- Gale wind speed reaching 70-80 kmph gusting to 90 kmph prevailing over adjoining northwest Arabian Sea off Pakistan coast. Thereafter, the winds would gradually decrease becoming squally wind speed reaching 50-60 kmph gusting to 70 kmph by evening of 1<sup>st</sup> September and improve thereafter gradually.
- Squally wind speed reaching 45-55 kmph gusting to 65 kmph is likely to prevail over adjoining central Arabian Sea till 2<sup>nd</sup> September morning and improve thereafter gradually.
- Strong wind speed reaching 30-40 kmph gusting to 50 kmph likely along and off Gujarat, Maharashtra & Karnataka coasts on 31<sup>st</sup> August & 1<sup>st</sup> September.

**(ii) Sea condition:**

- Squally weather with Rough to very rough sea conditions is very likely to prevail along & off Gujarat & adjoining north Maharashtra Coasts till 31<sup>st</sup> August evening.
- Squally weather with Rough sea to very rough sea conditions is likely along & off Pakistan coast till 1<sup>st</sup> September morning.
- Very rough to high sea condition is likely to prevail over northeast Arabian Sea off Pakistan coast during 31<sup>st</sup> August and improve thereafter becoming rough sea condition by morning of 1<sup>st</sup> September and improve thereafter.
- Very rough to high Sea condition is likely to prevail over northwest Arabian Sea off Pakistan and southeast Iran coasts from 31<sup>st</sup> August till 1<sup>st</sup> September, Rough sea condition on 2<sup>nd</sup> September and improve thereafter.

**(iii) Fishermen warning:**

Fishermen are advised not venture into

- Northeast & adjoining Eastcentral Arabian Sea and along & off Gujarat & adjoining north Maharashtra Coasts till 31<sup>st</sup> August.
- Northeast & adjoining eastcentral Arabian Sea off Gujarat coast and along & off Pakistan coasts during 31<sup>st</sup> August to 1<sup>st</sup> September.
- Northwest & adjoining westcentral Arabian Sea and along & off Pakistan coast from 31<sup>st</sup> August till 2<sup>nd</sup> September.

## **(b) Depression over Westcentral & adjoining Northwest Bay of Bengal**

The depression over westcentral & adjoining northwest Bay of Bengal off north Andhra Pradesh & South Odisha coasts moved north-northwestwards with a speed of 08 kmph during past 6 hours and lay centered at 1130 hours IST of today, the 31<sup>st</sup> August, 2024 over the same region near latitude 17.9°N and longitude 84.3°E, about 50 km south-southeast of Kalingapatnam (Andhra Pradesh), 110 km east of Visakhapatnam (Andhra Pradesh) and 160 km south-southwest of Gopalpur (Odisha).

It is likely to move northwestwards and cross north Andhra Pradesh and adjoining south Odisha coasts between Visakhapatnam and Gopalpur close to Kalingapatnam around midnight of today, the 31<sup>st</sup> August 2024.

### **Warnings:**

#### **(i) Rainfall Warning:**

**Odisha and Chhattisgarh:** Light to moderate rainfall at most places with heavy to very heavy rainfall at isolated places on 31<sup>st</sup> August & 1<sup>st</sup> September over south Odisha and south Chhattisgarh.

**Coastal Andhra Pradesh:** Light to moderate rainfall at most places with heavy to very heavy rainfall at a few places and extremely heavy rainfall at isolated places likely on 31<sup>st</sup> August. Light to moderate rainfall at most places with isolated heavy rainfall likely on 1<sup>st</sup> September.

**Telangana:** Light to moderate rainfall at most places with heavy to very heavy rainfall at a few places and extremely heavy rainfall at isolated places on 31<sup>st</sup> August and isolated heavy to very heavy rainfall on 1<sup>st</sup> September.

#### **(ii) Wind warning:**

- Squally weather with wind speed reaching 45-55 kmph gusting to 65 kmph likely over Westcentral and adjoining Northwest Bay of Bengal on 31<sup>st</sup> August and 1<sup>st</sup> September.
- Squally wind speed reaching 45-55 kmph gusting to 65 kmph is likely to prevail along & off North Andhra Pradesh & south Odisha coasts on 31<sup>st</sup> August and 1<sup>st</sup> September.
- Squally weather with wind speed reaching 35-45 kmph gusting to 55 kmph is likely to prevail along and off north Odisha and south Andhra Pradesh coasts on 31<sup>st</sup> August and 1<sup>st</sup> September.

#### **(iii) Sea condition:**

- Rough to very rough sea condition is very likely to prevail over Westcentral and adjoining Northwest Bay of Bengal on 31<sup>st</sup> August and 1<sup>st</sup> September.
- Rough to very rough sea condition is very likely to prevail along & off North Andhra Pradesh & south Odisha coasts on 31<sup>st</sup> August and 1<sup>st</sup> September.

#### **(iv) Fishermen warning:**

Fishermen are advised not venture into

- Westcentral & adjoining northwest Bay of Bengal till 1<sup>st</sup> September and along & off south Odisha and north Andhra Pradesh Coasts till 1<sup>st</sup> September.

#### **❖ Impact Expected (Andhra Pradesh, south Odisha, Telangana and south Chhattisgarh)**

- Localized Flooding of roads, water logging in low lying areas and closure of underpasses mainly in urban areas of the above region.
- Breaking of tree branches.
- Occasional reduction in visibility due to heavy rainfall.

- Reduction of visibility over sea area due to sea spray induced by strong wind and heavy rainfall.
- Disruption of traffic in major cities due to water logging in roads leading to increased travel time.
- Minor damage to kutcha roads.
- Possibilities of damage to vulnerable structure.
- Localized Landslides/Mudslides/landslips/mud slips/land sinks/mud sinks.
- Damage to horticulture and standing crops in some areas due to inundation.
- It may lead to riverine flooding in some river catchments (for riverine flooding please visit Web page of CWC)

❖ **Action Suggested**

Fishermen are advised not venture into

- Northeast & adjoining Eastcentral Arabian Sea and along & off Gujarat & adjoining north Maharashtra Coasts till 31<sup>st</sup> August.
- Northeast & adjoining eastcentral Arabian Sea off Gujarat coast and along & off Pakistan coasts during 31<sup>st</sup> August to 1<sup>st</sup> September.
- Northwest & adjoining westcentral Arabian Sea and along & off Pakistan and southeast Iran coasts from 31<sup>st</sup> August till 2<sup>nd</sup> September.
- Westcentral & adjoining northwest Bay of Bengal till 1<sup>st</sup> September and along & off south Odisha and north Andhra Pradesh Coasts till 1<sup>st</sup> September.
- Judicious regulation of offshore/onshore Operations
- Judicious regulation of surface transports including railways and roadways.
- Check for traffic congestion on your route before leaving for your destination.
- Follow any traffic advisories that are issued in this regard.
- Avoid going to areas that face the water logging problems often.
- Avoid staying in vulnerable structure.

❖ **Agromet Advisories for Heavy Rainfall** likely over Gujarat, Odisha and Andhra Pradesh due to both systems

- Make provision for draining out excess water from crop fields to avoid water stagnation in Gujarat State, Odisha and Andhra Pradesh.
- Provide mechanical support to horticultural crops and staking to vegetables.

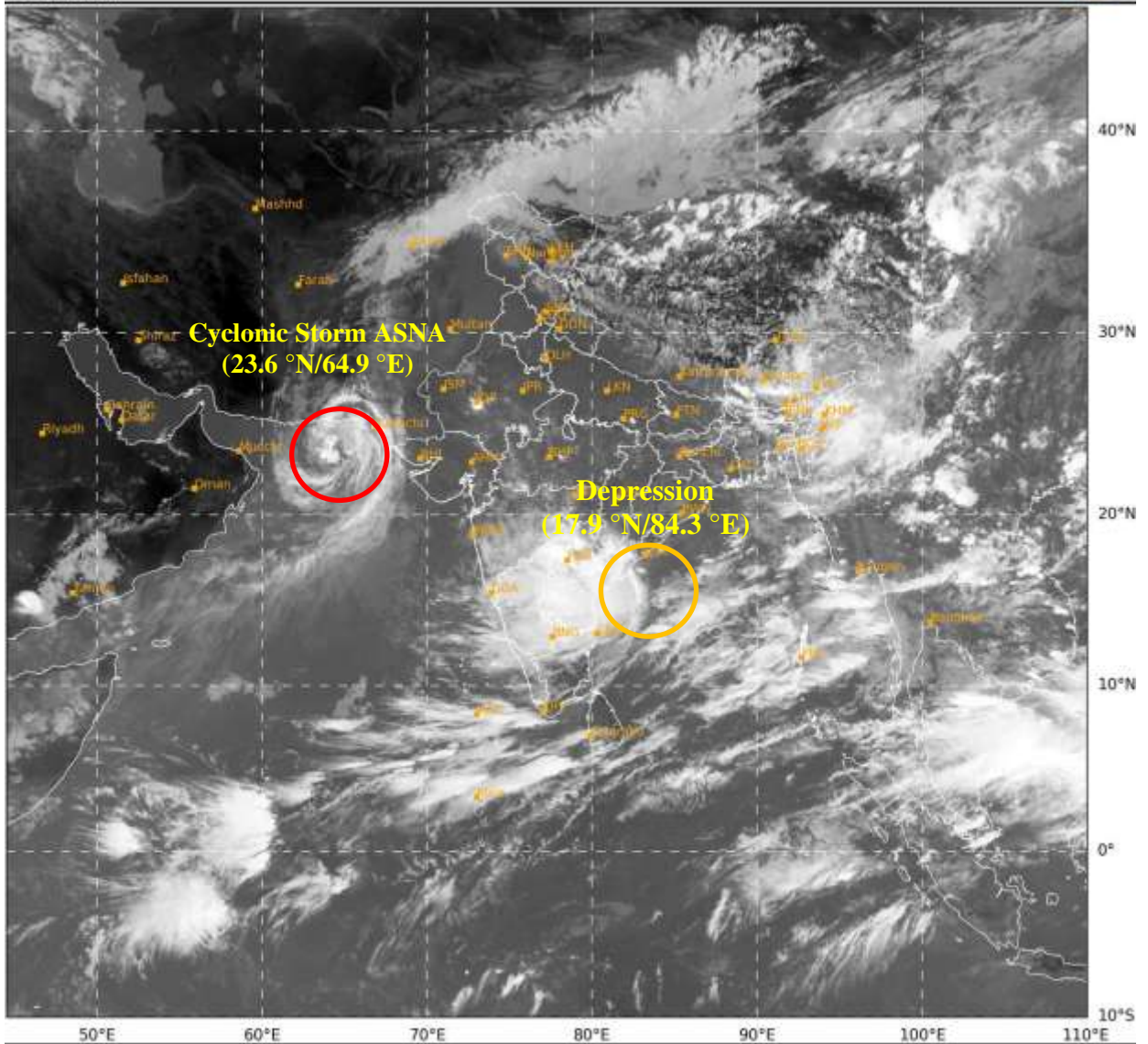
**Next bulletin will be issued at 1730 hours IST of 31<sup>st</sup> August, 2024.**

**(Dr. D. R. Pattanaik)**  
**Scientist-F, RSMC,**  
**IMD, New Delhi**

*Copy to: ACWC Kolkata/ACWC Mumbai/RMC Mumbai/CWC Ahmedabad/MC Jaipur/RMC, Nagpur/MC, Bhopal//CWC Bhubaneswar/MC, Goa/MC, Ranchi*

SAT : INSAT-3DR IMG  
IMG\_TIR1 10.8 um  
LIC Mercator

31-08-2024/(0615 to 0642) GMT  
31-08-2024/(1145 to 1212) IST



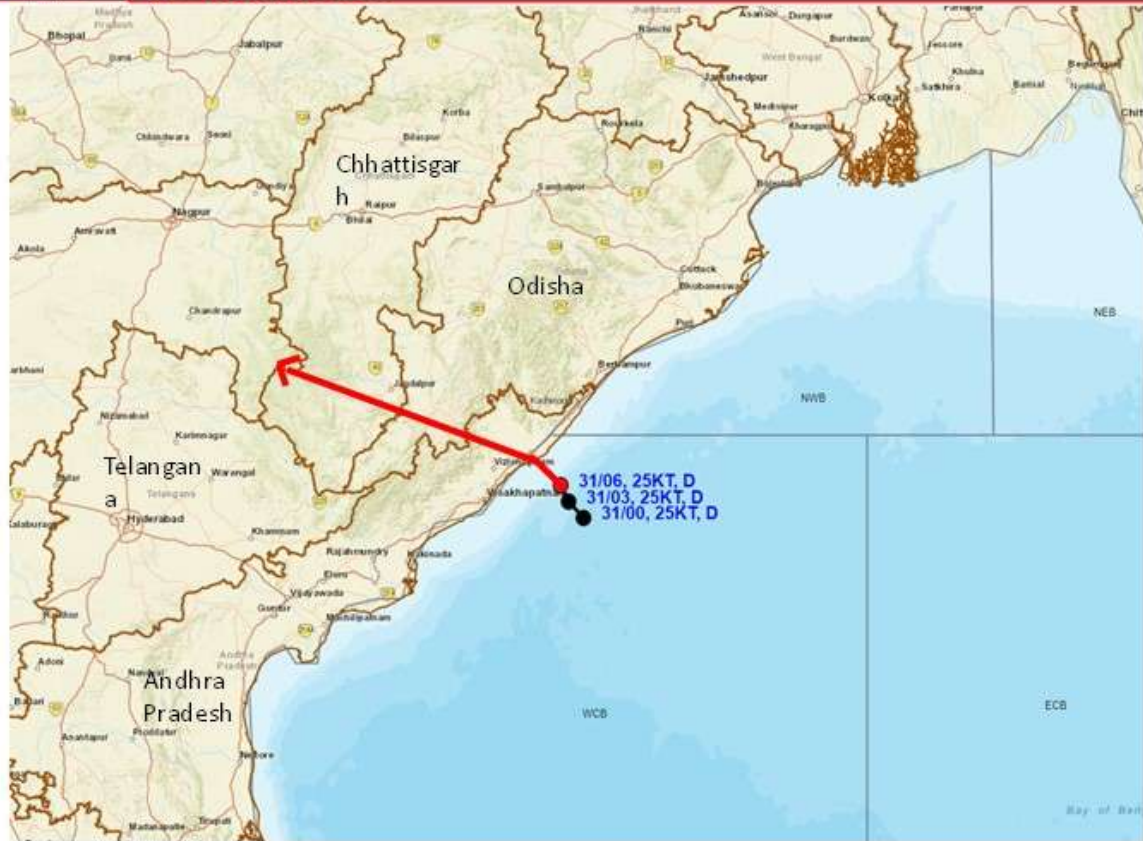
275

938

IMD, DELHI



**OBSERVED AND FORECAST TRACK OF DEPRESSION OVER WESTCENTRAL AND ADJOINING NORTHWEST BAY OF BENGAL BASED ON 0600 UTC (1130 IST) OF 31<sup>ST</sup> AUGUST, 2024.**



DATE/TIME IN UTC

IST=UTC + 0530

L: LOW PRESSURE AREA

WML: WELL MARKED LOW PRESSURE AREA

D: DEPRESSION (17-27 KT)

DD: DEEP DEPRESSION (28-33 KT)

CS: CYCLONIC STORM (34-47 KT)

SCS: SEVERE CYCLONIC STORM (48-63KT)

VSCS: VERY SEVERE CYCLONIC STORM (64-89 KT)

ESCS: EXTREMELY SEVERE CYCLONIC STORM (90-119 KT)

SuCS: SUPER CYCLONIC STORM ( $\geq$  120 KT)

● LESS THAN 34 KT

○ 34-47 KT

○  $\geq$  48 KT

— OBSERVED TRACK

— FORECAST TRACK

○ CONE OF UNCERTAINTY

WCB: WESTCENTRAL BAY OF BEIGAL

ECB: EASTCENTRAL BAY OF BEIGAL

NWB: NORTHWEST BAY OF BEIGAL



**OBSERVED AND FORECAST TRACK OF CYCLONIC STORM ASNA OVER NORTHEAST AND NORTHWEST ARABIAN SEA BASED ON 0600 UTC (1130 IST) OF 31<sup>ST</sup> AUGUST, 2024.**



DATE/TIME IN UTC  
 IST=UTC + 0530  
 L: LOW PRESSURE AREA  
 WML: WELL MARKED LOW PRESSURE AREA  
 D: DEPRESSION (17-27 KT)  
 DD: DEEP DEPRESSION (28-33 KT)  
 CS: CYCLONIC STORM (34-47 KT)  
 SCS: SEVERE CYCLONIC STORM (48-63KT)  
 VSCS: VERY SEVERE CYCLONIC STORM (64-89 KT)  
 ESCS: EXTREMELY SEVERE CYCLONIC STORM (90-119 KT)  
 SuCS: SUPER CYCLONIC STORM ( $\geq$  120 KT)

- LESS THAN 34 KT
- 34-47 KT
- $\geq$  48 KT
- OBSERVED TRACK
- FORECAST TRACK
- CONE OF UNCERTAINTY



**OBSERVED AND FORECAST TRACK OF CYCLONIC STORM ASNA OVER NORTHEAST AND NORTHWEST ARABIAN SEA BASED ON 0600 UTC (1130 IST) OF 31<sup>ST</sup> AUGUST, 2024.**



DATE/TIME IN UTC

IST=UTC + 0530

L: LOW PRESSURE AREA

WML: WELL MARKED LOW PRESSURE AREA

D: DEPRESSION (17-27 KT)

DD: DEEP DEPRESSION (28-33 KT)

CS: CYCLONIC STORM (34-47 KT)

SCS: SEVERE CYCLONIC STORM (48-63KT)

VSCS: VERY SEVERE CYCLONIC STORM (64-89 KT)

ESCS: EXTREMELY SEVERE CYCLONIC STORM (90-119 KT)

SiCS: SUPER CYCLONIC STORM (≥ 120 KT)

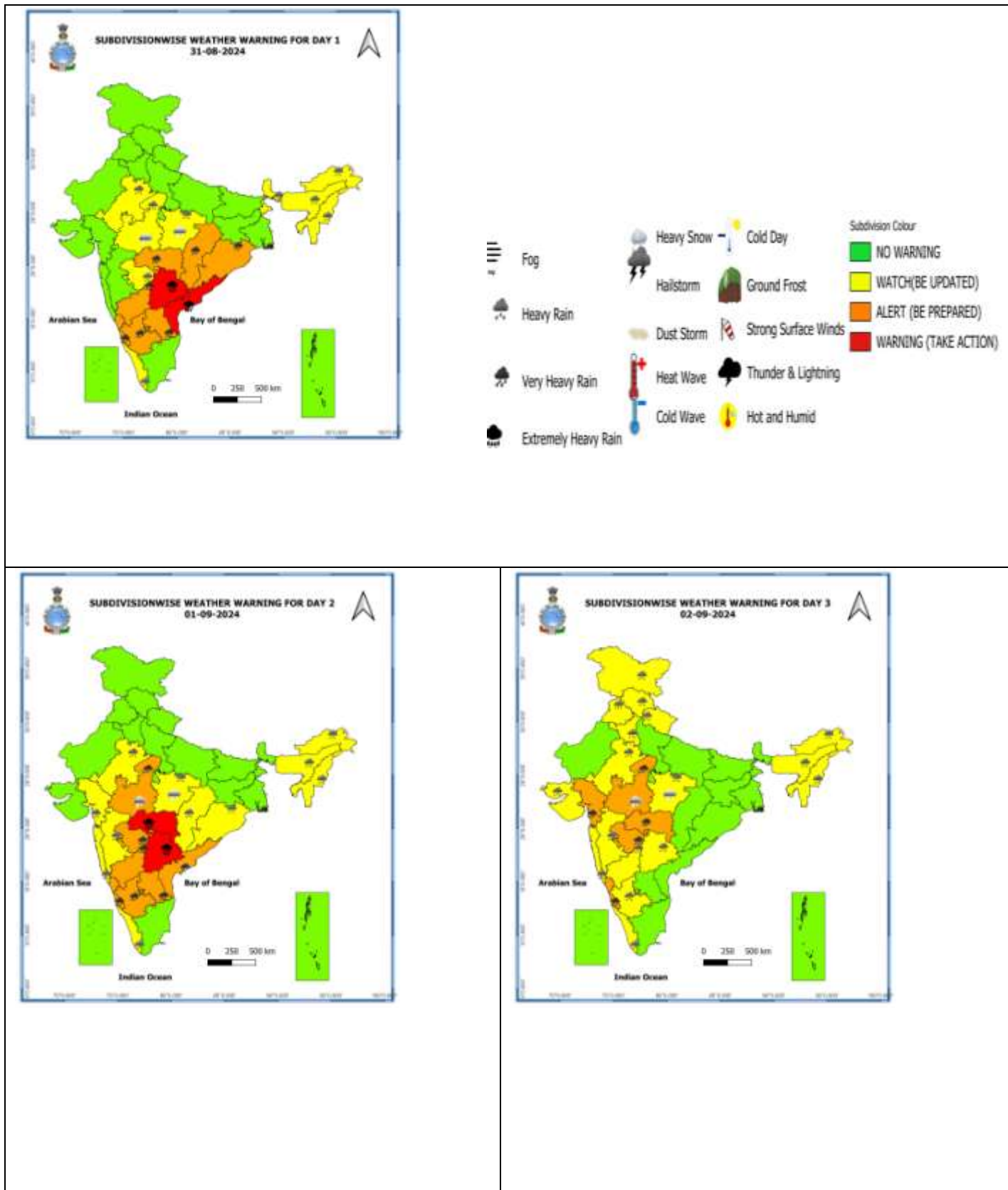
- LESS THAN 34 KT
- 34-47 KT
- ≥ 48 KT
- OBSERVED TRACK
- FORECAST TRACK
- CONE OF UNCERTAINTY
- AREA OF MAXIMUM SUSTAINED WIND SPEED:
- 28-33 KT (52-61 KMPH)
- 34-49 KT (62-91 KMPH)
- 50-63 KT (92-117 KMPH)
- ≥ 64 KT (≥118 KMPH)

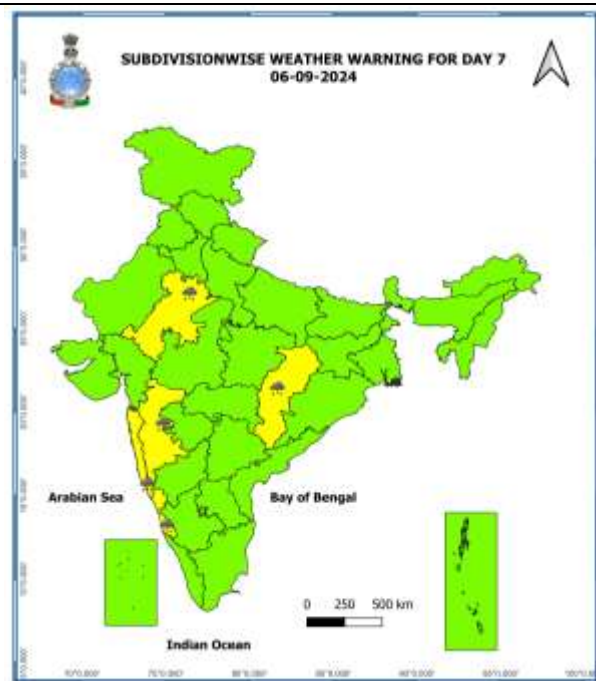
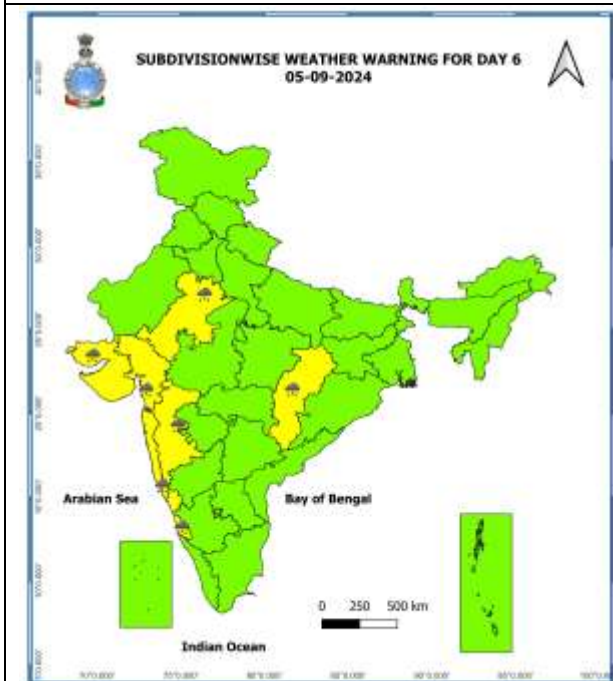
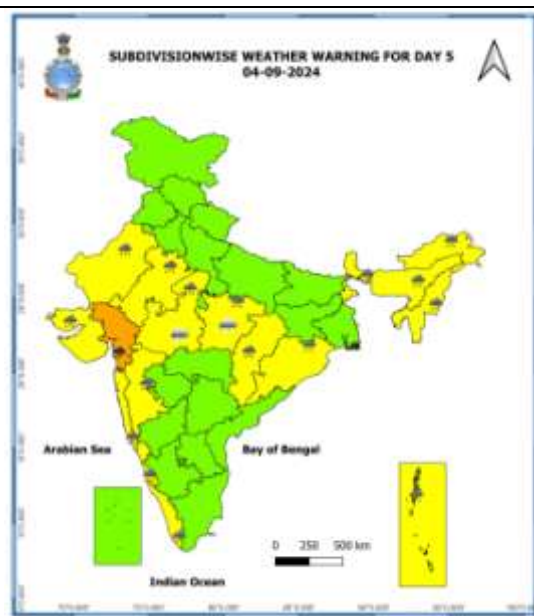
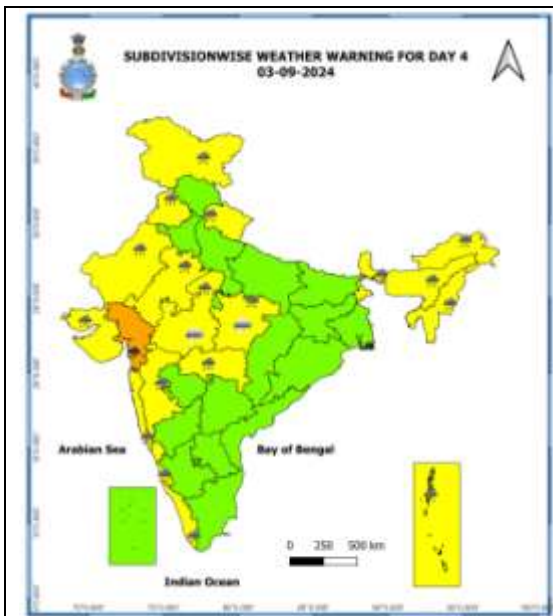
**IMPACT OVER THE SEA**

MSW (knot/kmph)	Impact	Action
28-33 (52-61)	Very rough seas	Total suspension of fishing operations
34-49 (62-91)	High to very high seas	Total suspension of fishing operations
50-63 (92-117)	Very high seas	Total suspension of fishing operations
≥ 64 (≥118)	Phenomenal	Total suspension of fishing operations



## Weather Warning Graphics





- Action may be taken based on **ORANGE** AND **RED** COLOUR warnings.
- Vulnerable regions likely urban and hilly areas action may be initiated for heavy rainfall warning.
- As the lead period increases forecast accuracy decreases.

## Flash Flood Guidance

### 24 hours Outlook for the Flash Flood Risk (FFR) till 1130 IST of 01-09-2024 :

**Low to Moderate flash flood risk** likely over few watersheds & neighbourhoods of following Met Sub-divisions during next 24 hours.

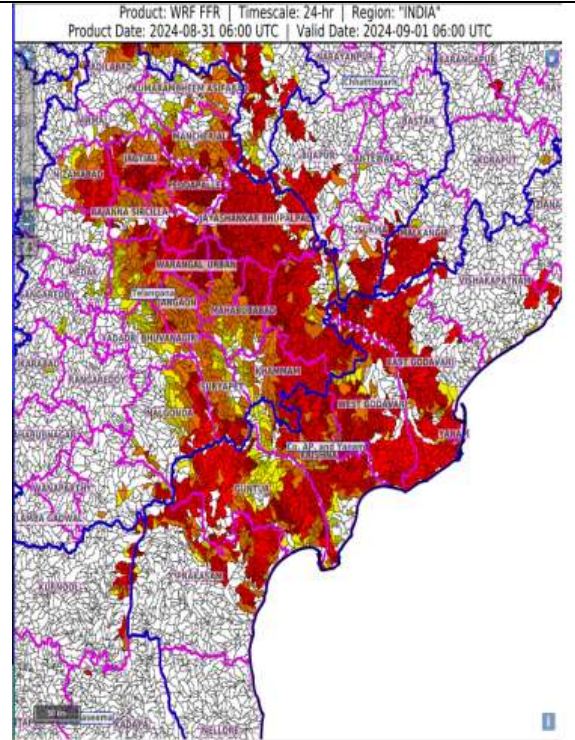
**Coastal AP & Yanam** - East Godavari, Guntur, Krishna, Prakasam, West Godavari, Visakhapatnam and Yanam districts.

**Rayalaseema** - Kurnool district.

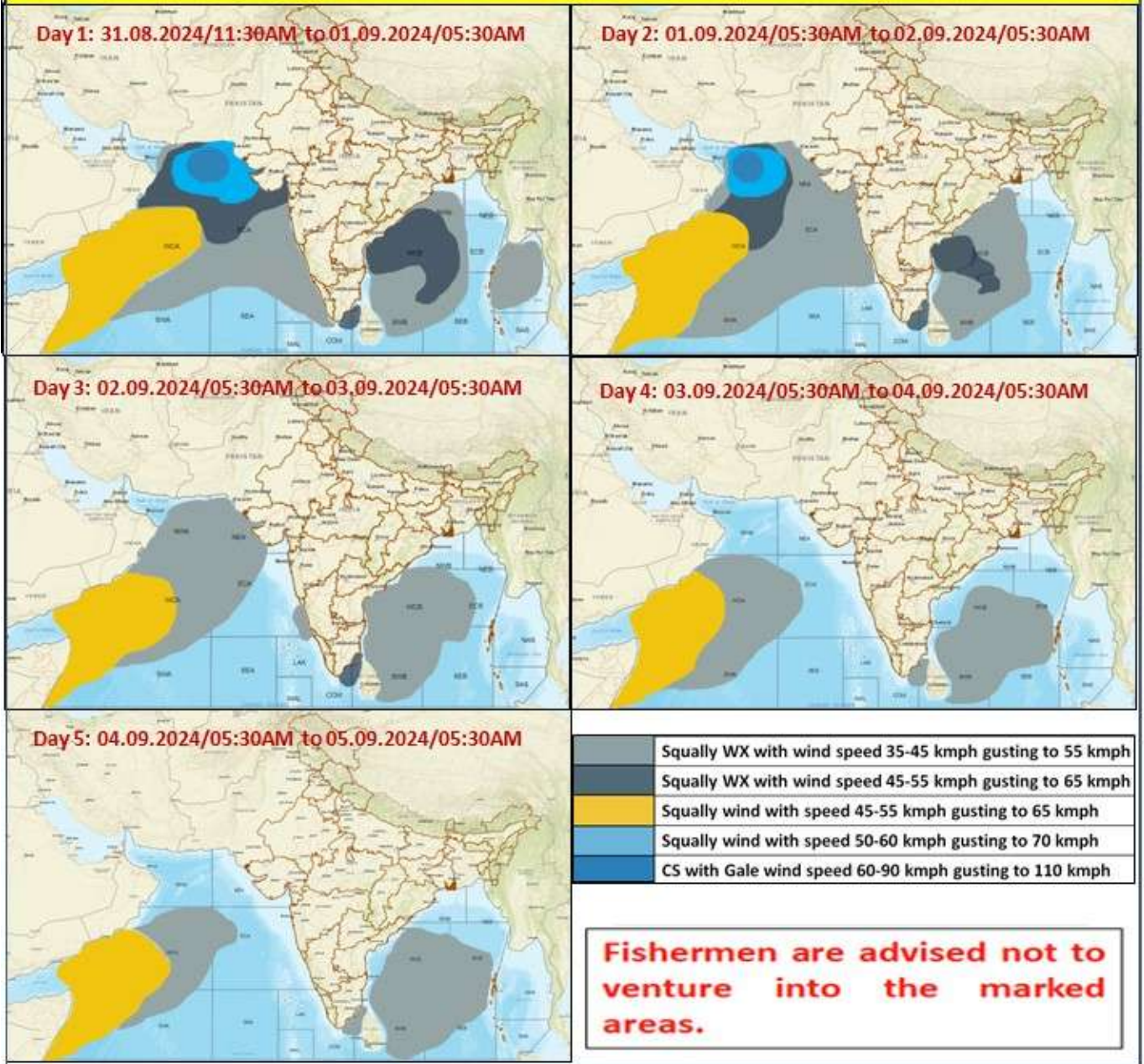
**Telangana** - Adilabad, B. Kothagudem, J. Bhupalpally, Jagtial, Jangaon, Khammam, Kumaram Bheem, Mahabubabad, Mancherial, Nalgonda, Nirmal, Nizamabad, Peddapalle, Rajanna Sircilla, Siddipet, Suryapet, Warangal\_Rural and Warangal\_Urban districts.

**Chhattisgarh** - Bijapur and Sukma districts.

Surface runoff/ Inundation may occur at some fully saturated soils & low-lying areas over AoC as shown in map due to expected rainfall occurrence in next 24 hours.



### Fishermen Warning Graphics



## Annexure –I

### Significant Rainfall recorded during past 24 hours till 0830 hours IST of today, 31.08.2024 (in cm):

- ❖ **Coastal Andhra Pradesh:** Masulipatnam Cdr (dist Krishna) 18, Vijayawada(arg) (dist Ntr District) 18, Gudivada (dist Krishna) 17, Kaikalur (dist Eluru) 15, Narsapuram (dist West Godavari) 14, Amaravati (dist Guntur) 13, Vijayawada A.p. (dist Ntr District) 12, Mangalagiri (dist Guntur) 11, Nandigama (dist Ntr District) 11, Bheemavaram (dist West Godavari) 11, Palakoderu (dist West Godavari) 9, Tenali (dist Guntur) 9, Tiruvuru (dist Ntr District) 9, Guntur (dist Guntur) 9, Eluru (dist Eluru) 8, Nuzvid (dist Eluru) 8, Atchampet (dist Palnadu) 8, Tadepalligudem (dist West Godavari) 7, Repalle (dist Bapatla) 7, Kunavaram (dist Alluri Sitharamaraju) 7, Karamchedu (dist Bapatla) 7,
- ❖ **Telangana:** Damaragidda (dist Narayanpet) 13, Madhira (dist Khammam) 9, Dornakal (dist Mahabubabad) 9, Kothaguda (dist Mahabubabad) 9, Thimmajipeta (dist Nagarkurnool) 9, Bonakal (dist Khammam) 9,
- ❖ **Odisha:** Malkangiri 11cm, Nandapur (Koraput) 8cm, Junagarh (Kalahandi) 5cm